



# Frequently Asked Questions



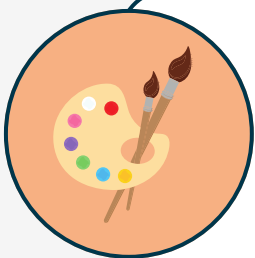
What subjects will my child study?

How can I support my child at home?



Who do I speak to about a concern?

How can I help my child be organised?



How can my child be involved in extra-curricular activities?



## Frequently Asked Questions



### What subjects will my child study?

At Elthorne Park High School we are **proud** of our broad and balanced curriculum.

Students study on a two week timetable:

- **English** (including 2 Reading lessons)- *8 hours*
- **Mathematics**- *6 hours*
- **Science**- *6 hours*
- **Physical Education**- *4 hours*
- **Design Technology** (Resistant Materials, Graphics, Food Technology and Textiles)- *3 hours*
- **Geography**- *3 hours*
- **History**- *3 hours*
- **Modern Foreign Languages** (*students study one modern foreign language chosen from French, German or Spanish*)- *3 hours*
- **Computing**- *2 hours*
- **Art**- *2 hours*
- **Drama**-*2 hours*
- **Music**- *2 hours*
- **Religious Studies**- *2 hours*
- **PSHCE**- *2 hours*



## Frequently Asked Questions



### How can I support my child at home?

At Elthorne Park High School we encourage our students to **persevere** with their learning.

#### Satchel One

At Elthorne Park High School, we use Satchel One to set home learning tasks. Parents have access to this website and are able to monitor student's home learning through this.

#### Reading

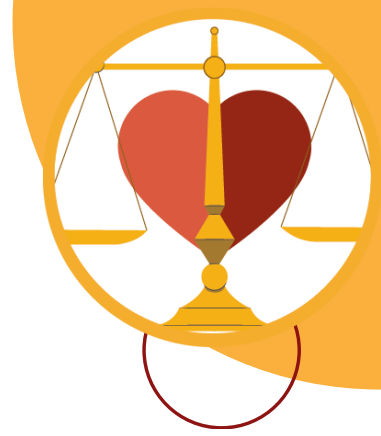
If your child says they don't have home learning, this isn't true! It makes a huge difference to student's progress if they are confident readers. Ensuring your child reads up to 20 minutes every day will support them in all areas of learning.

#### Questioning

We do lots of work in school to promote student's long term memory and you can help at home too! Asking them questions about their learning ("I can see your homework is on *The Industrial Revolution*- what is that? When was it?") will aid their study at school.



## Frequently Asked Questions



### Who do I speak to about a concern?

At Elthorne Park High School we support our students in being **principled**.

#### Form Tutor

Your first point of call is the form tutor- they know your child best as they see them every day. Email them (response time as per policy is 48 hours) with any questions you have.

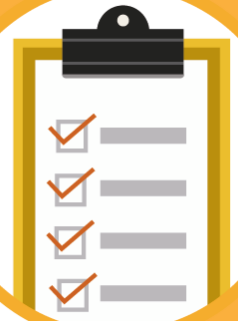
#### Year Leader and Pastoral Support Worker

Your child's Year Leader and Pastoral Support Worker will have an overview of the whole year group and should be contacted with any significant concerns. They will be able to raise any queries with student panel.

#### Student Panel

Student Panel consists of the Year Leader, PSW, Key Stage Leader and SENDCO and they meet once a fortnight. Here, they are able to discuss individual cases and decide on the next appropriate course of action. This could be support or intervention within school.

# Frequently Asked Questions



## How can I help my child be organised?

At Elthorne Park High School we want our students to be **prepared**.

### EduLink app

All of the information you need about your child's day will be on the EduLink app. This includes; timetable, credits and behaviour. Keep an eye on the app and make sure your child is prepared for their days at school.

### Uniform and Equipment

We want to ensure your child is prepared for school, learning and subsequently, ensure their success for the rest of their life. Please look at the school's website for the uniform and equipment list to ensure they have the correct equipment for every day. We do sanction students for missing items as it has a detrimental effect on their time in the classroom if they aren't properly equipped.

### Newsletter

The Newsletter is published every week and will keep you up-to-date with events at school. Please read through this and discuss anything important with your child.



ELTHORNE PARK  
HIGH SCHOOL

Elthorne Park High School

# Frequently Asked Questions



## How can my child be involved in extra-curricular activities?

At Elthorne Park High School, we want all students to **participate** in everything school has to offer! We run Elthorne Wider Opportunities days throughout the year where students are able to “try something new” or take part in out-of-school trips.

As well as in school activities, we will launch an extra-curricular club timetable in September. This offer also includes paid clubs. Please look at the school website for the timetable and sign up sheets for the clubs on offer!

## Can't find what you need?

Have a look at our parent/carer handbook on the school website which has detailed information about Elthorne Park High School.